

👁 Note!

Please note that there can be small differences between your product and the images in these instructions.

👁 Note!

Please note that during storage and transport, especially at high ambient temperature, some of the oil and grease used for assembly may leak and stain the packaging. This will not cause damage to the product, wipe off the excessive oil or grease with a cloth.

👁 Note!

Before you install this product, check the kit contents. If anything is missing, please contact an Öhlins dealer.

⚠ Warning!

Before you install this product, read the Öhlins Owner's manual. This product is an important part of the vehicle and the vehicle stability.

Cancellation kit, Audi RS4/RS5 B8

35020-21

Mounting Instructions

MOUNTING INSTRUCTIONS

⚠ Warning!

We strongly recommend to let an Öhlins dealer install this product.

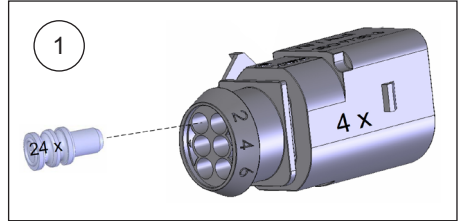
⚠ Warning!

If you work with a lifted vehicle, make sure that it is safely supported to prevent it from tipping over.

Preparation

1

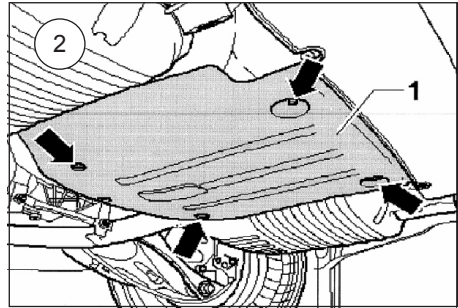
At first press into the connector (cable holes) the supplied sealing plugs. 6 sealing plugs are required for each connector.



Shut-down the Audi damping system

2

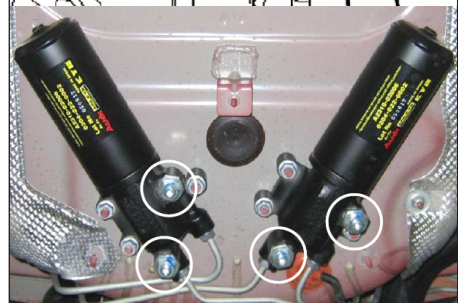
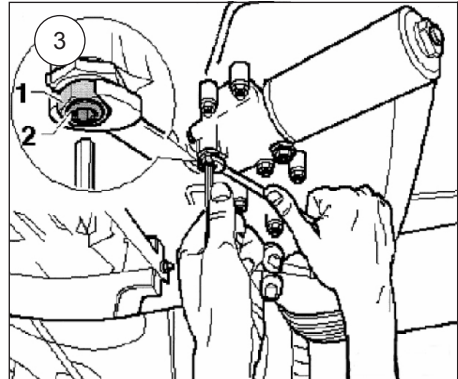
Remove the cover.



3

Close the factory separate reservoirs as follows:

Loosen all counter nut (1). Hand tighten all locking screw (2) until the stop position and counter all nuts again.



MOUNTING INSTRUCTIONS

4

Connect the adapter, VAS 6209/1, to the hose that needs to be emptied. Open the lever at the adapter and empty the hose.

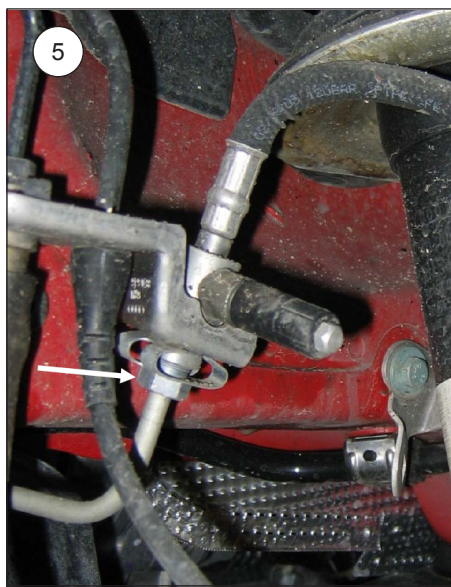
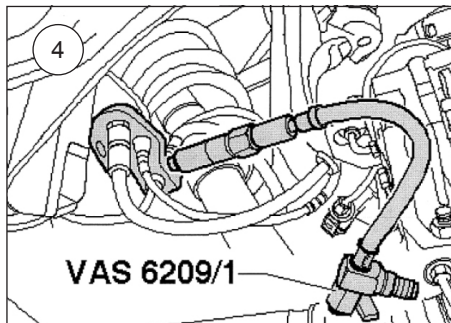
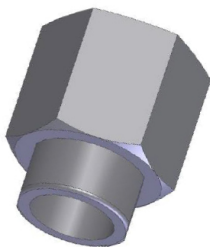
5

Disconnect the flexible pipe from the damper and close it with the supplied sealing plug.

Note!

A minimal volume of oil comes out of the pipe.

Following, dismantle chassis components after vehicle manufacturer guidelines.

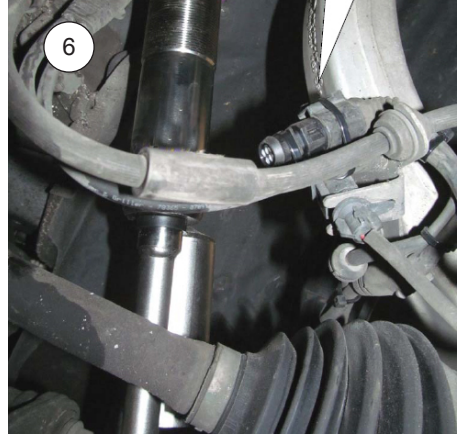


MOUNTING INSTRUCTIONS

Front axle

6

Plug in the closure plug the original wiring harness and fix the plug on the wire harness with a cable tie.



MOUNTING INSTRUCTIONS

Rear axle

7

Plug in the closure plug the original wiring harness and fix the plug on the wire harness with a cable tie.



MOUNTING INSTRUCTIONS

Control box

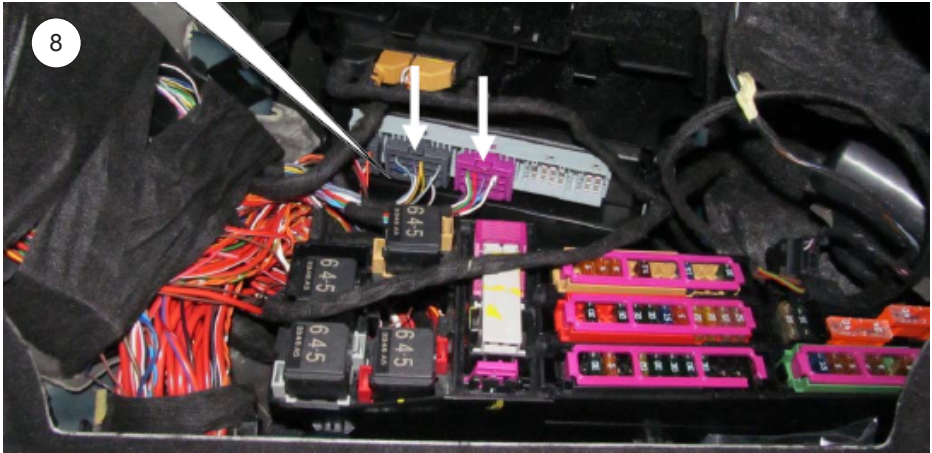
8

Please disconnect the battery according to the manufacturers information.

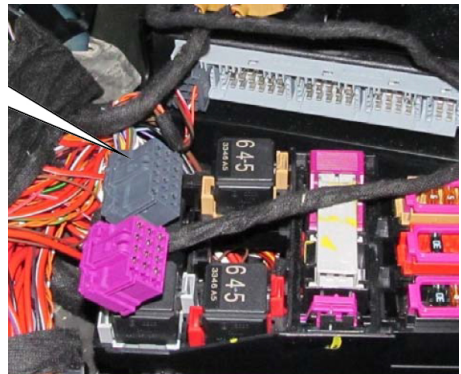
⚠ Caution!

At some vehicles it is necessary to teach the control units after reconnecting the battery. We recommend to read the vehicle failure memory before you disconnect the battery, to exclude possible faulty sources after the installation.

Unplug the market connector



These connector are no longer needed



MOUNTING INSTRUCTIONS

9

Connect the supplied cable set to the control box with the OEM control box.



Fix the control box with hook-and-loop tape.



Öhlins products are subject to continuous improvement and development, therefore, although these instructions include the most up-to-date information available at the time of printing, minor updates may occur.

To find the latest information contact an Öhlins distributor. Please contact Öhlins if you have any questions regarding the contents in this document.

Part no. MI_35020-21_0
Issued 2018-09-27

© Öhlins Racing AB. All rights reserved. Any reprinting or unauthorized use without the written permission of Öhlins Racing AB is prohibited.

Öhlins Racing AB
Box 722
S-194 27 Upplands Väsby, Sweden
Phone +46 8 590 025 00
fax +46 8 590 025 80



www.ohlins.com